

INTERACTIVE TOUCH SCREEN



CHERRY INTERACTIVE TOUCH SCREEN

Cherry Communication bring high and international standard interactive touch screens with Windows and Android enabled to provide unmatched working experience, video conference made easy with embedded full high definition 8MP camera and 8 array microphones, 20 touch point provides trainer and students a better experience then ever.

01

8 Mega Pixel Camera Full High Definition

02

8 array built-in microphone for communication

03

Aluminum alloy frame, sandblasted and anodized on the surface, iron case back cover, active heat dissipation

04

4mm physical tempered anti-riot glass; enhance visual effects and enhance touch experience

05

High-speed 20-point touch writing experience, better roundness and faster writing speed



06

Use the internationally accepted OPS slot, Ci3, Ci5, Ci7 and Ci9 processor can integrated plug-in design, easy to upgrade and maintain, there is no external connection line of the computer module

07

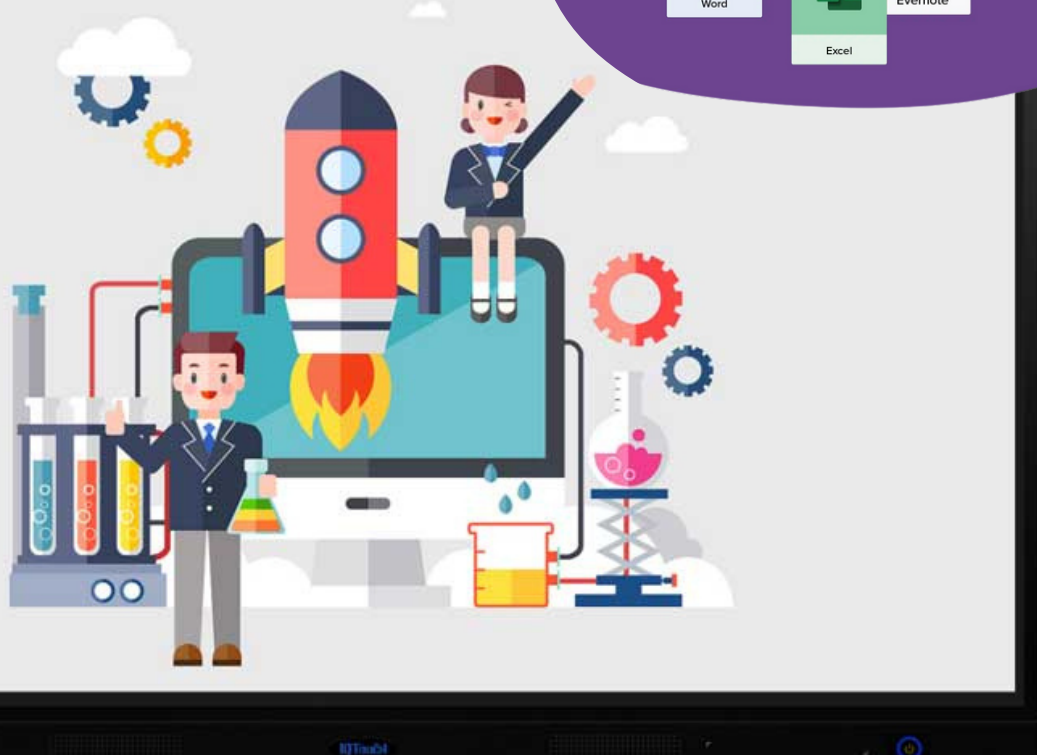
Front expansion port: 1 PC-USB, 1 full channel-USB, 1 HDMI input, 1 TOUCH USB, convenient for users to use external devices

08

The front of the speaker output to prevent the sound effect from deteriorating due to the embedded environment

09

Child lock function, the button function can be shielded by setting



10

4K Ultra High Definition can display a crystal clear picture with amazing experience.

11

The front button can be started by one button, and the screen and the host can be turned on and off at the same time, and the operation is simple and convenient

12

From Android 8.0 up to 11.0 system support, multi-theme system setting and switching at any time,

13

The system comes with functions such as screen projection, electronic whiteboard, comments, etc.



14

The screen assembly process adopts zero-fit technology to make the display screen naturally clear and transparent

15

High-speed 20-point touch writing experience, better roundness and faster writing speed

16

Multiple interface to connect other device like HDMI, VGA, USB, LAN and Wifi Hotspot

17

Multiscreen casting software for sharing wireless presentation

18

Support gestures to pull up the menu, the menu can quickly adjust the brightness and sound, and switch the signal source



SPECIFICATION

Display	Model No.	CM-100065 - 65 Inches CM-100075 - 75 Inches CM-100085 - 85 Inches CM-100086 - 86 Inches CM-100098 - 98 Inches CM-1000100 - 100 Inches CM-1000110 - 110 Inches CM-1000120 - 120 Inches
	Screen Size	65, 75, 85, 86, 98, 100, 110, 120 Inches
	Screen Assembly Process	Zero Fit
	Backlight Type	Dled Direct Type
	Display Type	2D
	Dot Pitch	0.372 X 0.372Mm
	Effective Display Area	1870.16*1051.5Mm
	Screen Ratio	16:9
	Physical Resolution	3840X 2160 UHD 4K
	Brightness	350-380Cd/m ² (Center Point)
	Contrast	1200:1 (Typ.) Transmission
	Display Color	8 Bit/16.7 Million
	Viewing Angle	178°,178°
	Refresh Rate	60Hz
	Corresponding Time	8Ms
	Audio Output Power	8Ω10W X2
Touch	Touch Type	Infrared Touch Screen
	Touch Points	20 Touch Points
	Touch Embedding Method	Embedded On The Side
	Touch Drive Mode	Hid Free Drive
	Touch Writing Surface Material	4Mm Tempered Glass
	Touch Screen Sensing Method	Fingers Or Other Non-Transparent Touch-Sensitive Media
	Touch Screen Positioning Resolution	4096X4096
	Detection Function And Calibration	With Software Automatic Detection Function
	Responding Speed	<8Ms
	Number Of Touches	Unlimited Times
	Scan Speed	100Hz/Sec
	Cursor Speed	125P/S
	Touch Accuracy	≤2Mm
	Touch Support Operating System	Win7/ Win10/ Linux/ Android

Specifications and Parameters	Hanger Hole Distance	800*400Mm
	Installation Principles	Increase 20Mm On One Side
	Packing	Kraft Carton
	Net Weight/Gross Weight	65.8Kg/83Kg Net Weight (Bare Metal Weight)/Gross Weight (Including Accessories And Packaging)
	Installation Method	Hanger (Standard)
	Front Interface	Usb1 (Pc Usb), Usb2 (All Channels Shared Usb), Hdmi In, Touch Usb
	Storage Environment	Storage Temperature: -20°C~60°C; Storage Humidity: 10%Rh~90%Rh
	Working Environment	Working Temperature: -10°C~55°C; Working Humidity: 10%Rh~90%Rh
	Service Life	≥50000 Hours
Power	Operating Voltage	110~240V/50~60Hz
	Power Type/Method	Three-Core Power Supply/Fixed
	Power Switch/Position	Yes/Post
	Power Consumption	About 330W
	Standby Power Consumption	≤0.5W
Motherboard configuration scheme	System Version	Android 8.0, 9.0, 10, 11
	Configuration	Memory 2Gb.3Gb.4Gb DDR3, Storage 16Gb.32Gb, 64Gb, Wifi 2.4Ghz +5G (5G Projection Hotspot)
	Processor	Msd848(8386)
	Input Port	RJ45*1 (SIDE) HDMI*2 (SIDE) TOUCH USB*1 (SIDE) VGA*1 (SIDE) VGA AUDIO IN*1 (SIDE) YPBPR*1 (SIDE) AV*1 (SIDE)
	Output Port	SPDIF*1 (SIDE) EARPHONE*1 (BOTTOM)
	Audio	MPEG1/2 LAYER I/II, AC-3 (CUSTOMIZATION REQUIRED), AAC-LC, WMA...
	Video	MPEG-2/4,AVS,H.264,H.265,TS,REALMEDIA...
	Picture	Support Jpg, Bmp, Png And Other Image Format Browsing And Support Rotation/Slide Show/Picture Zoom Function
	Installation Method	OPS
	Processor	CI3, CI5, CI7 and CI9 (Upto 11 Generation)
	Ram	4, 8, 16 Gb
	Hard Disk	SSD 128, 256 Gb
	Sound Card	Onboard Realtek Alc622 Hd
	Maximum Output Resolution	3840*2160 - 4K UHD

Computer Standard	Main Frequency	2.4Ghz
	Chipset	Intel(R) 7 Series Chipset Family Mobile
	Graphics Card	Nuclear Display Hd Graphics 3000
	Wifi	2.4G
	Input Port	1*LAN PORT, 3*USB3.0 PORT, 3*USB2.0 PORT, 1*MIC-IN PORT
	Output Port	1*HDMI PORT, 1*VGA PORT, 1*LINE-OUT PORT
Camera	Fixed Camera	Full HD 1080P Resolution
Microphone	Mics	8 Array built-in Mics
Remarks	Accessories: Wall Mount, Expansion Screw, Touch Pen, Warranty Card, Certificate, Manual, Remote Control Optional Accessories: Mobile Bracket, Telescopic Pointer, Screen Projector	